

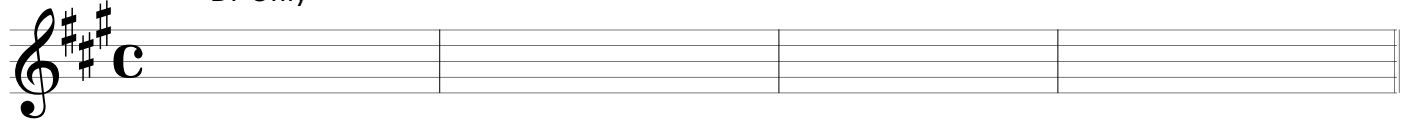
T=100



# パプリカ / 米津玄師

## Intro

→ Dr Only → →



**A** A  $\frac{E}{G\#}$  F#m E D E A

(1x) → Dr&Key (1x) → Bass

A  $\frac{E}{G\#}$  F#m E D E A → all in

**B** F#m Cm7 D A D E C# F#m

F#m Cm7 D E A D C# F#

**C** B C# Dm7  $\frac{D\#}{C\#}$  B F# A7 Dm7  $\frac{D\#}{C\#}$

B C# F#  $\frac{C\#}{F}$  Dm7 G7 B C# F#

① N.C. (Dr. only) ② N.C. → (Dr. only) → → → → → → → →

**D** B C# Dm7 B C# Dm7

→ GT & Vo

B C# Dm7 B C# F# → all in

B C# Dm7 C# Dm7 B C# Dm7

B C# Dm7 C# Dm7 B C# F#

C' B C# Dm7 C# Dm7 B F# A# Dm7 C#

B C# F# C# Dm7 G7 B C# F#

Dm7 G7 B C# F#

Vo & Bass & Rhythm only →

*Fine*