

Cause We've Ended As Lovers

悲しみの恋人達

INT1

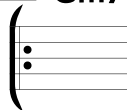


Cm A^b_Δ7 Fm $\frac{F}{A}$ $\frac{C}{B^b}$

INT2

Cm7 A^b_Δ7 Fm7 Csus4 C

A



Cm7 A^b_Δ7 Fm7 Csus4 C

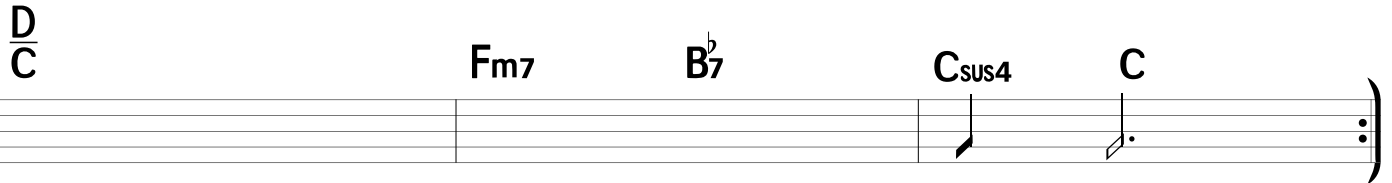
Cm7 A^b_Δ7 Fm7 Csus4 C

B

$\frac{D}{C}$

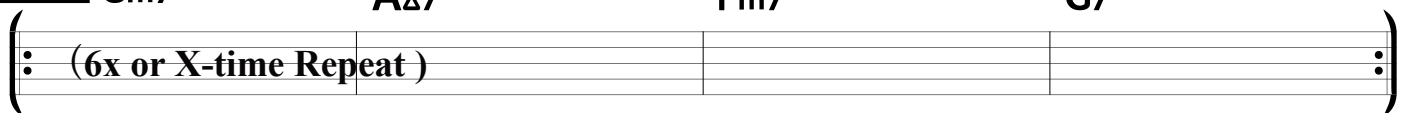


Fm7 B^b7 Csus4 C



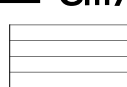
$\frac{D}{C}$ Fm7 B^b7 Csus4 C

Solo



Cm7 A^b_Δ7 Fm7 G7

A'



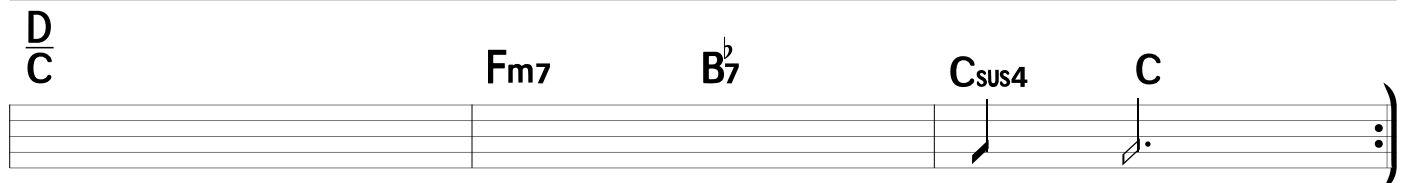
Cm7 A^b_Δ7 Fm7 Csus4 C

B'

$\frac{D}{C}$

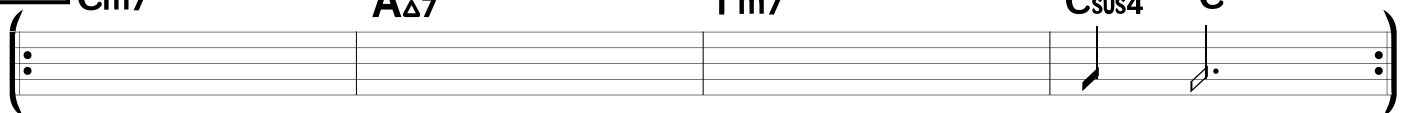


Fm7 B^b7 Csus4 C



$\frac{D}{C}$ Fm7 B^b7 Csus4 C

End



Cm7 A^b_Δ7 Fm7 Csus4 C